

# HRL 12-260 W

12V 55Ah

ASTERION HRL-W series batteries are high-tech lead-acid batteries for modern uninterruptible power supply systems intended for responsible consumers. These are maintenance-free batteries manufactured with the use of AGM technology with a gas recombination system (VRLA). The HRL-W series is characterized by increased current efficiency due to the use of thicker electrodes, as well as high-tech formulations with structural agents in the active mass during the manufacturing process. The HRL-W series belongs to the ASTERION Xpert product line, designed especially for use in "heavy" uninterruptible power supply systems of data centers, communication systems and other high-tech equipment.



## Battery construction

Element	Positive plate	Negative plate	Case	Lid	Valve	Terminal	Separator	Electrolyte
Material	Lead dioxide	Lead	ABS		Rubber	Copper	Fiberglass	Acid

## Specifications

Nominal voltage.....	12 V
Cell.....	6
Design life.....	12 years
Nominal capacity (25°C)	
10 min. disch. by const. power up to 1,70V/cell.....	260 W
20 hours rate (2,9 A; 1,75 V/cell).....	58 Ah
10 hours rate (5,5 A; 1,80 V/cell).....	55 Ah
Self-discharge.....	3% capacity per month 20°C
Internal resistance (20°C).....	5,8 mΩ

## Operating temperature range

Discharge.....	-20÷60°C
Charge.....	-10÷60°C
Storage.....	-20÷60°C
Maximum discharge current (20°C).....	550A (5sec)
Max.charge current.....	16,5 A
Cycle mode (2,35÷2,4 V/Cell)	
Temperature correction factor.....	30 mV/°C
Standby mode (2,27÷2,3 V/Cell)	
Temperature correction factor.....	20 mV/°C

## Application

- Uninterruptible power supply units
- Standby power service units
- Medical equipment
- Various fields of instrument-making industry

## Performance & characteristics

- AGM technology allows to recombine 99% of the generated gas;
- No restrictions on air transportation;
- Compliance with the UL requirements;
- Lead plates, alloyed by calcium, provide high energy density;
- Maintenance-free. Do not require distillate topping;
- Long service life;
- The battery case is made of flame-retardant ABS plastic.

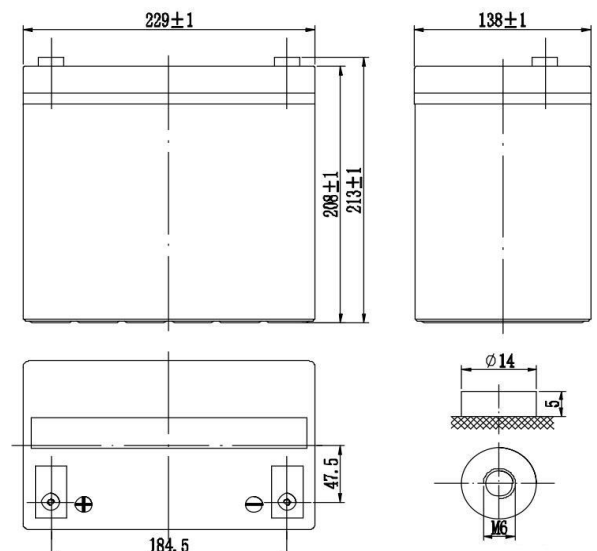
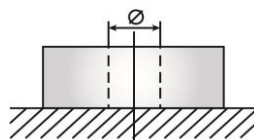
## Dimensions (±2mm)

Length, mm.....	229
Width, mm.....	138
Height, mm.....	208
Height over terminals, mm.....	213
Weight (±3%), kg.....	18

Layout  
B



Terminal type  
Insert Ø6 mm



# HRL 12-260 W

12V 55Ah

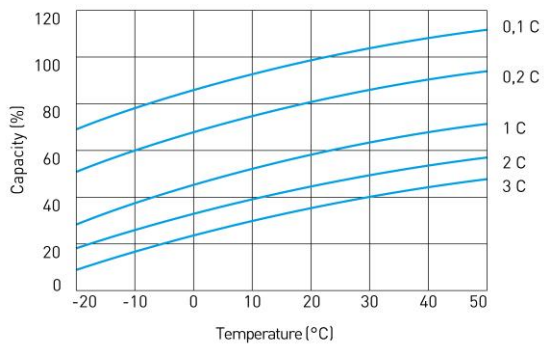
## Discharge Constant Current, A (25°C)

V/cell	5 min	10 min	15 min	20 min	25 min	30 min	35 min	45 min	1 h
1,60	206	156	121	99,5	86,8	77,5	68,8	57,2	45,7
1,65	194	147	114	94,5	82,3	73,5	65,3	54,5	43,6
1,70	182	138	109	89,5	77,9	69,5	61,9	51,7	41,5
1,75	169	130	103	84,4	73,4	65,5	58,4	49,0	39,4
1,80	162	124	99,1	81,8	71,4	63,8	56,9	47,7	38,4

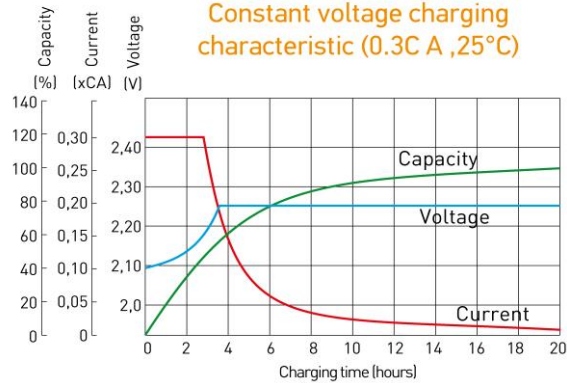
## Discharge Constant Power, W/cell (25°C)

V/cell	5 min	10 min	15 min	20 min	25 min	30 min	35 min	45 min	1 h
1,60	384	281	216	174	150	131	118	100,0	80,3
1,65	367	270	208	168	144	127	114	96,5	78,1
1,70	351	260	200	163	139	123	110	93,9	75,9
1,75	335	249	193	156	135	119	107	90,4	73,7
1,80	318	239	185	151	129	114	103	87,9	71,5

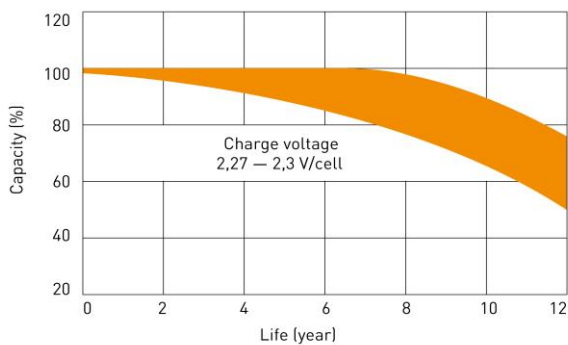
### Temperature effects on capacity



### Constant voltage charging characteristic (0.3C A, 25°C)



### Life characteristics of Standby use



### Cycle service life in relation to depth of discharge

